

# MAGE

Project Management



# Contents

Company Overview	4
Vision	6
Values	7
Strengths	8
Optimized Project Management Solutions	10
Mage Group	12
MAGE Expertise in Action	14
Sustainability	17
Portfolio Domains	18
Services	19
Completed Projects	20
Projects - Fit - Out	48

**MAGE IS A PROJECT MANAGEMENT CONSULTANT THAT REPRESENTS YOU, THE OWNER, WHERE EVER YOU ARE, CREATING A BRIDGE BETWEEN ARCHITECTS, CONSULTANTS, CONTRACTORS, AND ALL RELEVANT PARTIES FOR PROJECTS OF ANY SCALE.**



## Company Overview

Achieving Dreams for Over 2 Decades, MAGE stands at the forefront of the construction project management landscape in the UAE and KSA markets. At MAGE, we believe in orchestrating construction symphonies, we seamlessly direct each aspect of the project to function harmoniously. We step in where contractors and consultants may struggle, managing every minute detail and simplifying complexities.

Our dedication transcends mere oversight; we add significant value to each project, consistently exceeding the cost of our services. Partnering with MAGE ensures not just cost-effective solutions but also saves time, eliminates potential errors, and mitigates additional expenses.





# Vision

Our commitment lies in navigating the intricate nuances of every project. When challenges arise that are beyond the scope of contractors or consultants, our expertise becomes the beacon. We're devoted to offering clear, comprehensive solutions and ensuring unmatched excellence in every endeavor.

# Mission

We strive to create your dream property without the premium price tag. We navigate the complex construction process, offering cost-effective solutions and comprehensive services to ensure your project is completed on time, on budget, and to the highest quality standards.

# Values

## PROFESSIONAL REPRESENTATION OF CLIENTS

Standing as a strong advocate for our clients, irrespective of their location or background, guaranteeing their interests are always prioritized.

## MASTERY IN EXECUTION

Embracing the challenges of complex projects to deliver impeccable results.

## CLIENT-CENTRIC COMMITMENT

Committing ourselves to realize our client's vision, ensuring every project reflects their aspirations.

## INNOVATIVE EXCELLENCE

Continuously pushing boundaries to introduce innovative approaches in our processes.



# Strengths

**AT MAGE, OUR DEEP-ROOTED EXPERTISE, EXPANSIVE INDUSTRY NETWORK, AND ADEPTNESS AT MANAGING COMPLEX PROJECTS UNDERLINE OUR COMMITMENT TO PIONEERING CONSTRUCTION EXCELLENCE AND TAILORED SOLUTIONS**



## PROFOUND EXPERTISE

With over two decades of industry immersion, ensuring each endeavor conforms to international benchmarks.

## ROBUST NETWORK

Our expansive and trusted network of suppliers, contractors, and strategic partners stands as a testament to our industry stature.



## MASTERY OF COMPLEXITY

We excel in executing complex and demanding projects, showcasing our proficiency in managing complexity with ease.



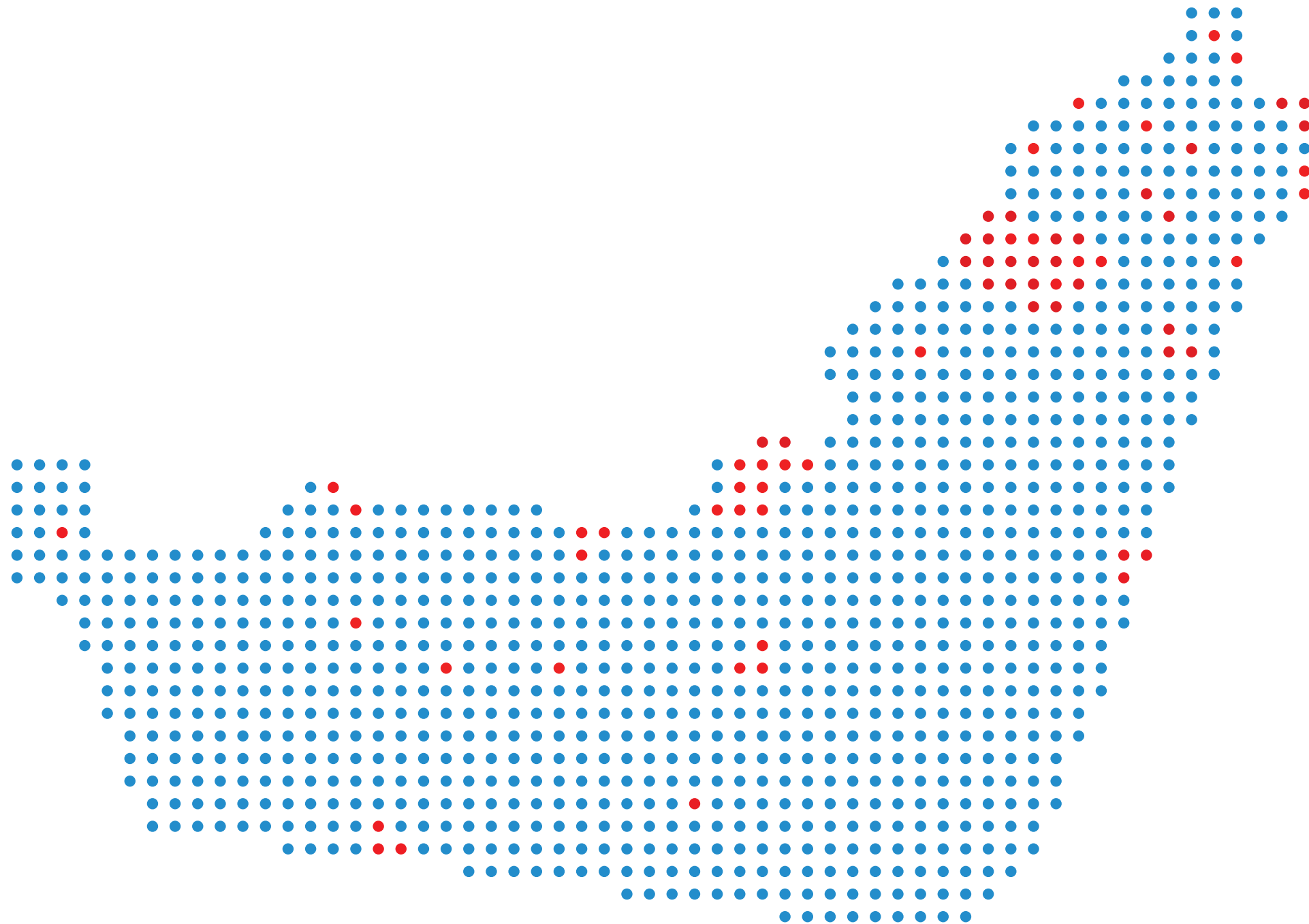
# Optimized Project Management Solutions

## AT MAGE, OUR TAILORED MANAGEMENT, SUPERVISION, & ADVISORY PACKAGE ENCOMPASSES

- Expert guidance on land acquisition, home design, property refurbishment, and real estate development in the UAE.
- Emphasis on cost-efficiency, superior quality, and timely project delivery.
- Our unique approach to Project Management Consultancy (PMC) focuses on ensuring optimal use of time, budget, and quality.
- With MAGE, you receive unparalleled value, preventing potential risks and unnecessary expenditures.



# MAGE Group



**+21**  
Experience

**+60**  
Clients

**+15**  
Employees

**+70**  
Projects



# MAGE Expertise in Action

## HARNESSING DECADES OF INDUSTRY EXPERIENCE, MAGE CONSISTENTLY NAVIGATES THE COMPLEXITIES OF CONSTRUCTION MANAGEMENT

### ■ COST MANAGEMENT

MAGE excels in budget planning, contract negotiation, and cost containment, ensuring projects meet financial targets without compromising quality.



### ■ QUALITY ASSURANCE

Through rigorous protocols, MAGE guarantees construction meets the highest standards, preserving property value and integrity.



### ■ TIME MANAGEMENT

Leveraging advanced tools and strategies, MAGE ensures timely project completion, eliminating unnecessary delays.



### ■ RISK MITIGATION

MAGE's proactive risk identification and mitigation approach protects projects from unforeseen challenges and costs.







# Sustainability

**AT MAGE, OUR COMMITMENT TO SUSTAINABILITY GOES BEYOND COMPLIANCE. WE CHAMPION FORWARD-THINKING CONSTRUCTION METHODS THAT ALIGN WITH GLOBAL ECO-INITIATIVES**

## ■ TECHNOLOGICAL INTEGRATION

Harnessing advanced technologies for smarter, energy-efficient buildings.



## ■ RENEWABLE ENERGY UTILIZATION

Prioritizing green energy sources to reduce our carbon footprint.



## ■ NATURAL LIGHTING OPTIMIZATION

Designing spaces that maximize daylight, reducing the need for artificial lighting.



## ■ NATURAL VENTILATION STRATEGIES

Leveraging architectural designs that promote airflow, ensuring healthier indoor environments.



## ■ ECO-FRIENDLY BUILDING MATERIALS

Selecting sustainable, high-quality materials that align with our green building ethos.





# Portfolio Domains



Luxury Mansions/Villas



Commercial Complexes



Luxury Hotels



Residential Properties

# Services



Project Management Consultancy



Contractor Management



Legal and Regulatory Guidance



Time Management



Quality Assurance



Risk Minimization



Progress Reports



Post-Handover Service





# Completed Projects







**Project:**  
Reference photos for Mansion Villa  
and other Facilities







**Project:**  
Reference photos for Mansion Villa  
and other Facilities







**Project:**  
Reference photos for Mansion Villa







**Project:**  
Reference photos for Mansion Villa







**Project:**  
Reference photos for Mansion Villa



**Project:**  
Reference photos for Mansion Villa





**Project:**  
Reference photos for Mansion Villa







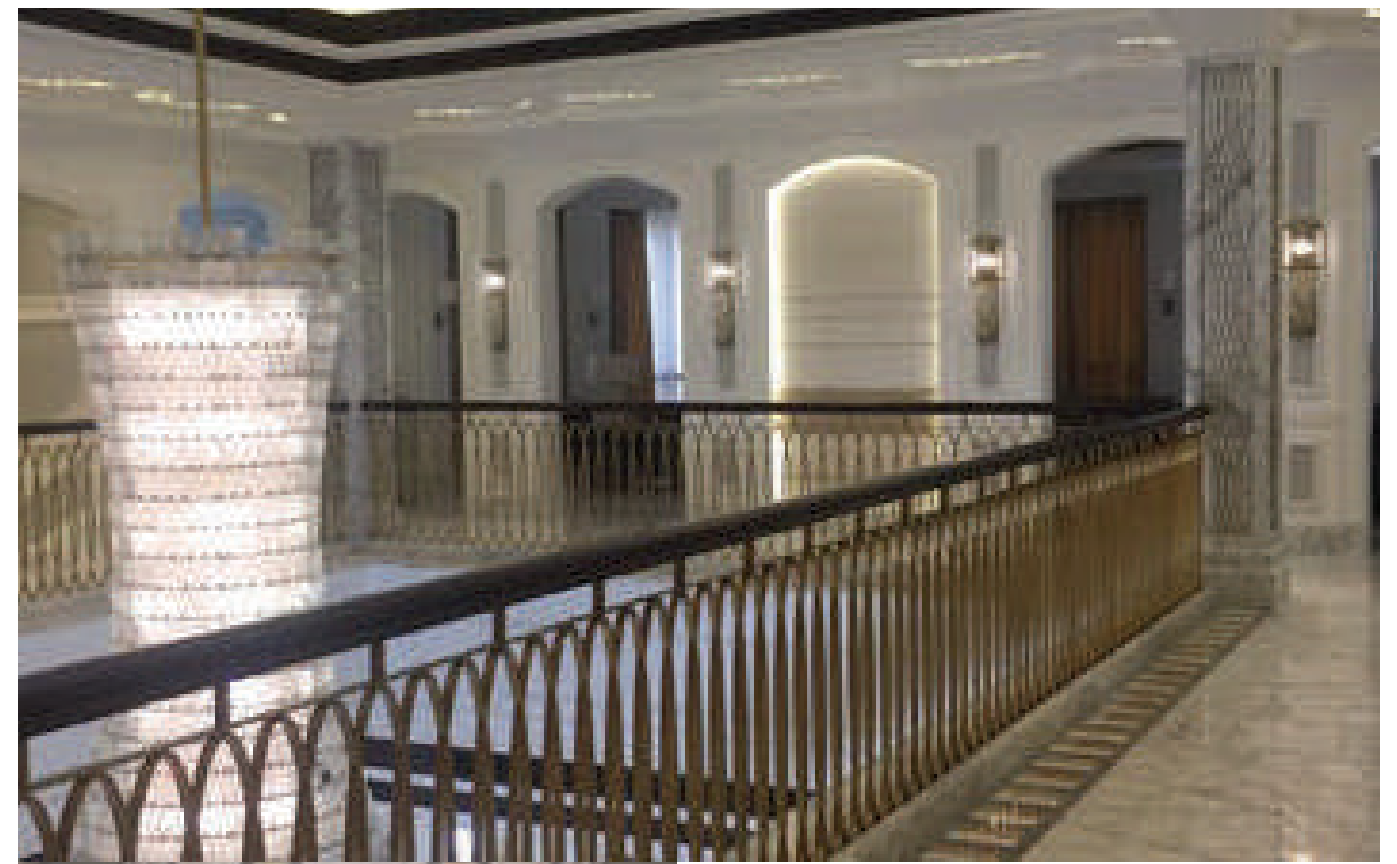
**Project:**  
Reference photos for Mansion Villa







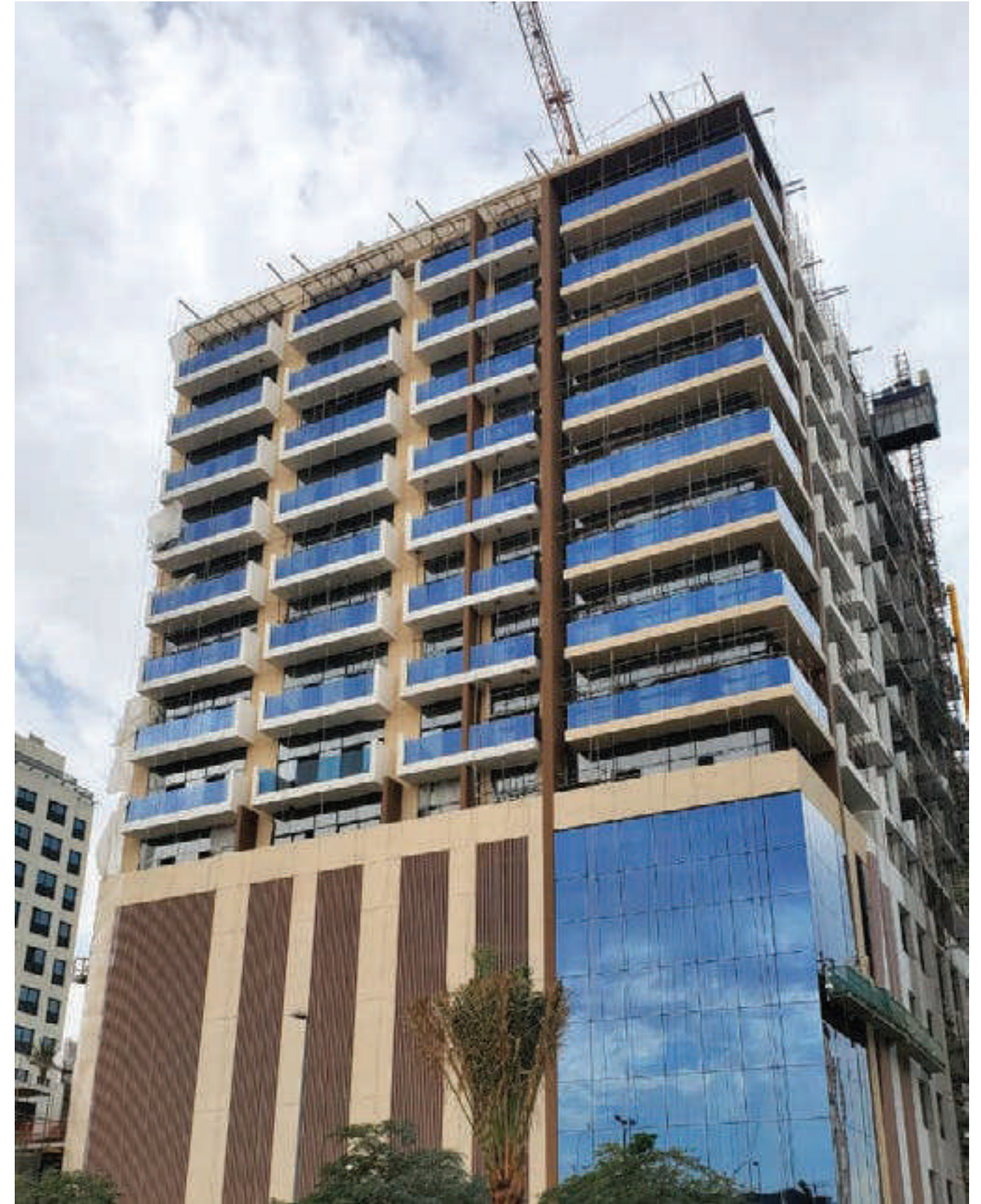
**Project:**  
Reference photos for Mansion Villa







**Project:**  
Reference photos for Building







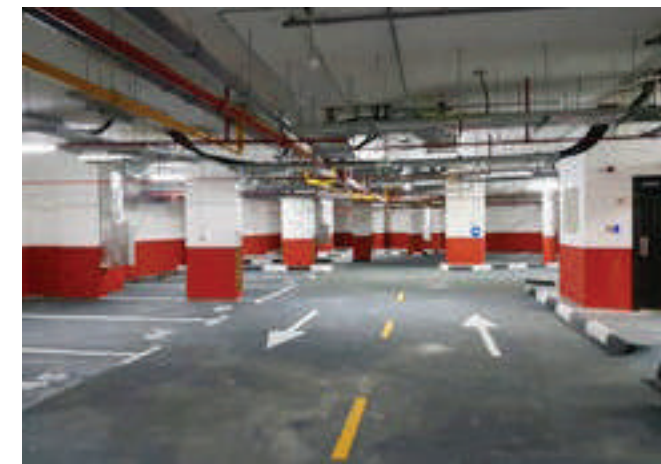
**Project:**  
Reference photos for Building







**Project:**  
Reference photos for Building



**Project:**  
Reference photos for Building





**Project:**  
Reference photos for Building



**Project:**  
Reference photos for Warehouse



**Project:**  
Reference photos for Warehouse





**Project:**  
Reference photos for NURSERY SCHOOL



**Project:**  
Reference photos for Hospital

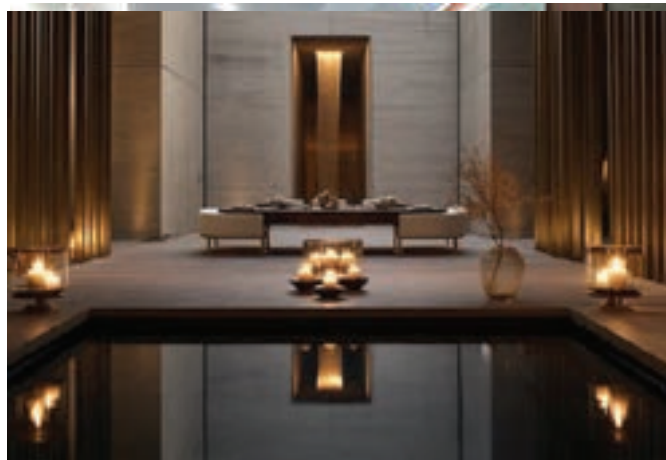


# Projects

## Fit-out Works







**Project:**  
Reference photos for Internal Fit Out Works



**Project:**  
Reference photos for Internal Fit Out Works





**Project:**  
Reference photos for Internal Fit Out Works



**Project:**  
Reference photos for Internal Fit Out Works







## Contact Information



Office number 3210 - I Rise Tower- Barsha Heights - Dubai - United Arab Emirates



[info@mage.ae](mailto:info@mage.ae)



[www.mage.ae](http://www.mage.ae)



+971547729900



+971 4 448 9173  
+971 50 784 9409